



July 22, 2020 (revised)

Please see the below recommendations as a followup to the June 25, 2019 Sunkissed Horticultural Consultant's tree assessment and a list of additional trees for removal or monitoring,

Trees addressed in 2019 report:

Tree #1 Arizona Ash: tree health and structure is improving; continue to monitor

Tree #2 Arizona Ash: tree health and structure is improving; continue to monitor

Tree #4 Mulberry: tree health and structure is improving; continue to monitor

Tree #5 Arizona Ash: removed; replaced with crape myrtle

Tree #8 Aleppo Pine: removed; replaced with oak

Tree #9 Aleppo Pine: removed not replaced

Tree #12 Arizona Ash: some improvement; continue to monitor; add emitters to increase water

Tree #14 Arizona Ash: removed; replaced with Sophoro (Texas Mountain Laurel)

Tree #15 Arizona Ash: adjacent tree in this area was removed and not replaced; recommended to remove #15 and replace

Tree #17 Arizona Ash: tree health and structure is improving; continue to monitor

Tree #18 Aleppo Pine: removed and replaced with crape myrtle

Tree #19 Arizona Ash: removed and replaced with crape myrtle

Tree #21 Arizona Ash: tree put on some insignificant new growth, recommended to remove and replace

Tree #22 Mimosa: removed and not replaced

Tree #39 Aleppo Pine: tree health and structure is improving; continue to monitor

Tree #40 Mulberry: removed not replaced

Tree #42 Aleppo Pine: no improvement, continue to monitor and consider for possible removal

Tree #44 Aleppo Pine: tree health and structure is improving; continue to monitor

Tree #46 Aleppo Pine: tree health and structure is improving; continue to monitor

Tree #47 Aleppo Pine: tree health and structure is improving; continue to monitor

Tree #48 Aleppo Pine: tree health and structure is improving; no change in lean; needs a few dead limbs removed

Tree #49 Aleppo Pine: tree health and structure is improving; continue to monitor

Tree #52 Aleppo Pine: tree health and structure is improving; remove one dead limb and continue to monitor

Tree #55 Aleppo Pine: tree health and structure is improving; remove one dead limb and continue to monitor
Tree #58 Aleppo Pine: removed not replaced
Tree #63 Aleppo Pine: tree health and structure is improving; no change in lean; continue to monitor
Tree #67 Aleppo Pine: tree health and structure is improving; continue to monitor
Tree #70 Aleppo Pine: removed not replaced
Tree #71 Aleppo Pine: tree health and structure is improving; continue to monitor
Tree #72 Olive: no change in decay size or damage; continue to monitor
Tree #73 Olive: no change in decay size or damage; continue to monitor
Tree #74 Olive: no change in decay size or damage; continue to monitor
Tree #75 Aleppo Pine: removed not replaced
Tree #77 Aleppo Pine: removed not replaced
Tree #79 Aleppo Pine: removed not replaced

Trees in decline not listed on 2019 report:

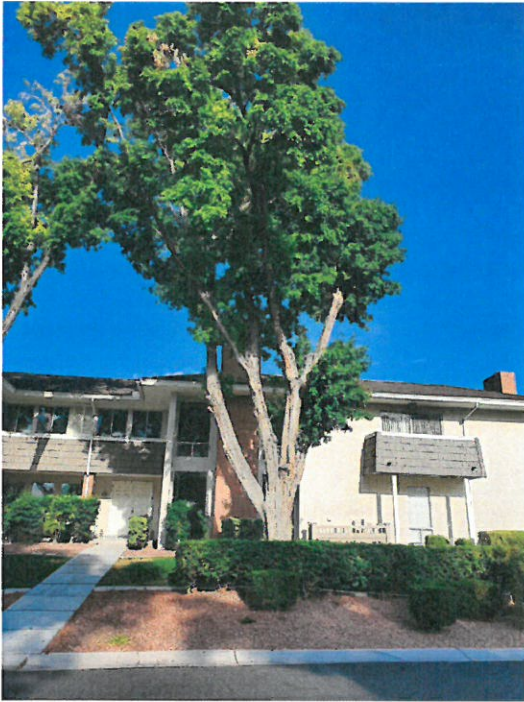
Tree #20 Aleppo Pine: Stressed/dying, had shown some improvement and was removed from consultant's Monitor List; now in severe decline and is recommended to remove and replace
Tree #N-01* (AZ): Stressed/dying; in close proximity to street light; remove and no replacement
Tree #N-02 (FM): Stressed/dying; remove and no replacement
Tree #N-03 (AP): Stressed, poor structure; remove and no replacement due to utility box
Tree #N-04 (AZ): Stressed, poor location (not enough soil volume in this planter area); remove and no replacement
Tree #N-05 (AP): Very stressed; in need of additional irrigation (add 10-12 emitters); continue to monitor
Tree #N-06 (AP): Very stressed; in need of additional irrigation (add 10-12 emitters); continue to monitor
Tree #N-07 (AP): Very stressed; remove large dead limb; in need of additional irrigation (add 10-12 emitters); continue to monitor

** The N in tree number denotes New tree added to list.*

In general, all Aleppo Pine are in need of additional irrigation, and many of the Ash as well. For any tree not located in a turf area, it is recommended to renovate the irrigation to add more emitters in larger concentric rings around the bases of the tree for better coverage of active root absorption area.

Respectfully submitted,
Shirl McMayon, ISA Certified Arborist #WE-3047A

MONTEREY 2020 TREE REPORT PHOTOS



#1 (AZ) Continue to monitor



#2 (AZ) Continue to monitor



#4 (FM) Fully recovered; remove from monitor list



#5 (AZ) Removed and replaced with Crape Myrtle



#8 (AP) Removed and replaced w/Oak



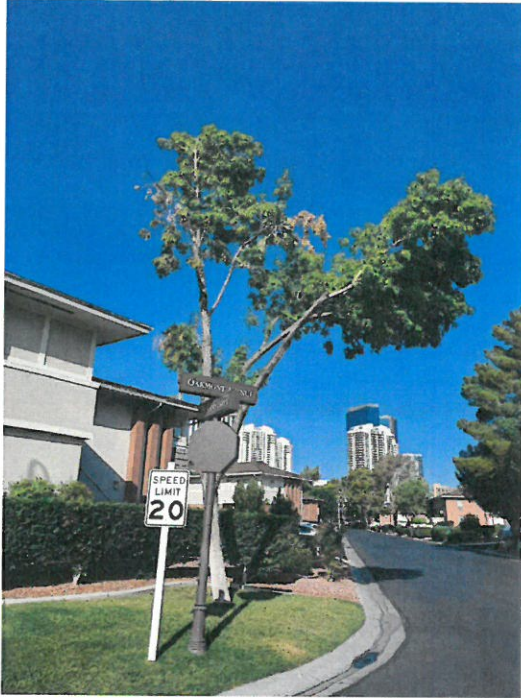
#9 (AP) Removed, not replaced



#12 (AZ) Continue to monitor



#14 (AZ) Removed, replaced with Sophora



#15 (AZ) Removed; recommended to remove and replace remaining stressed AZ in this area



#17 (AZ) Continue to monitor



#18 (AP) Removed and replaced with Crape Myrtle



#19 (AZ) Removed and replaced with Crape Myrtle



#21 (AZ) Recommended to remove and replace



#22 (MM) Removed and not replaced



#39 (AP) Improving; continue to monitor



#40 (FM) Removed not replaced



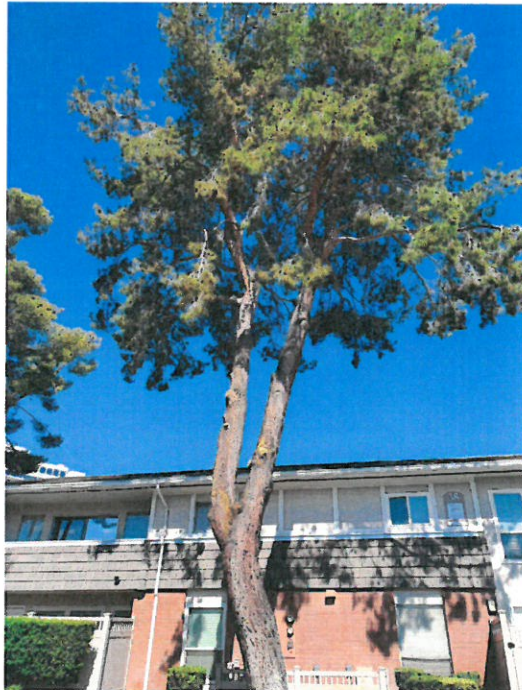
#42 (AP) No improvement; continue to monitor and consider for possible removal



#44 (AP) Improving; continue to monitor



#46 (AP) Improving, continue to monitor



#47 (AP) Improving, continue to monitor



#48 (AP) No change in lean; continue to monitor; remove dead limbs



#49 (AP) Improving; continue to monitor



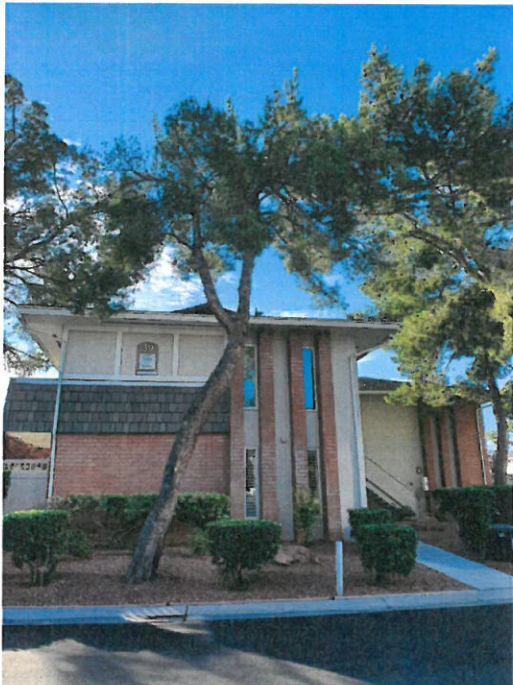
#52 (AP) Improving, continue to monitor



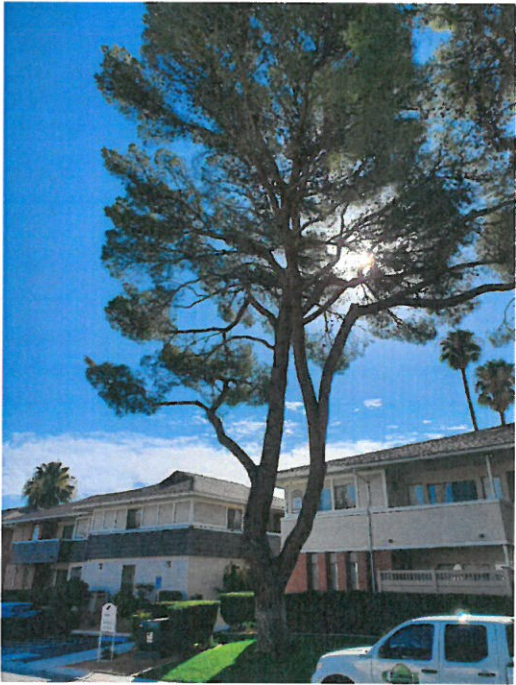
#55 (AP) Improving; remove one dead limb; continue to monitor



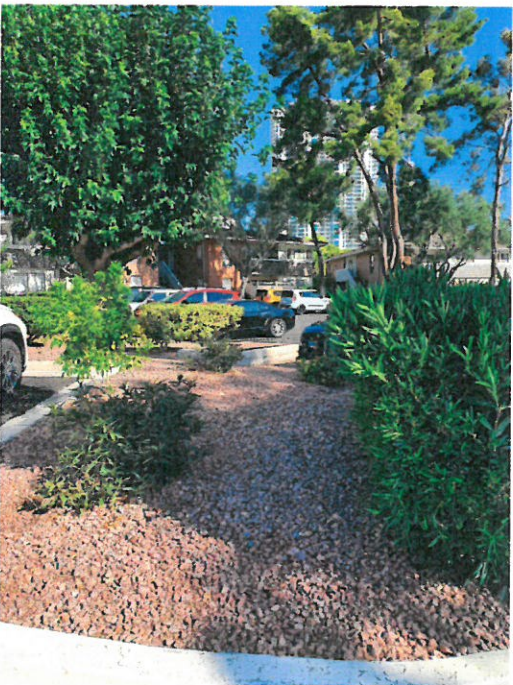
58 (AP) Removed not replaced



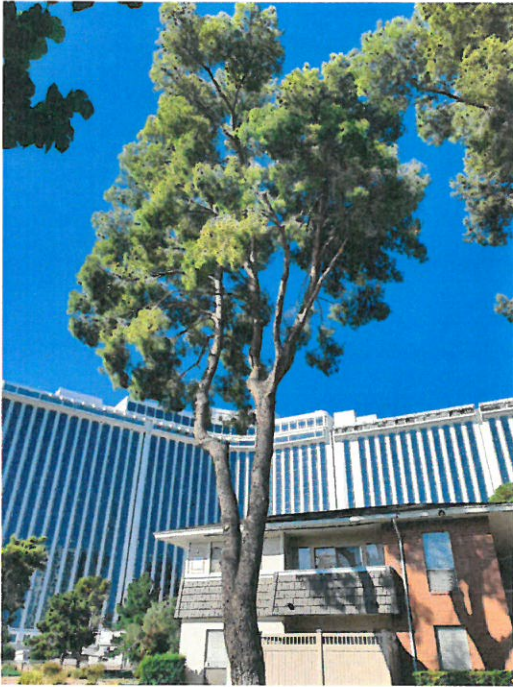
#63 (AP) Improving; no change in lean;
continue to monitor



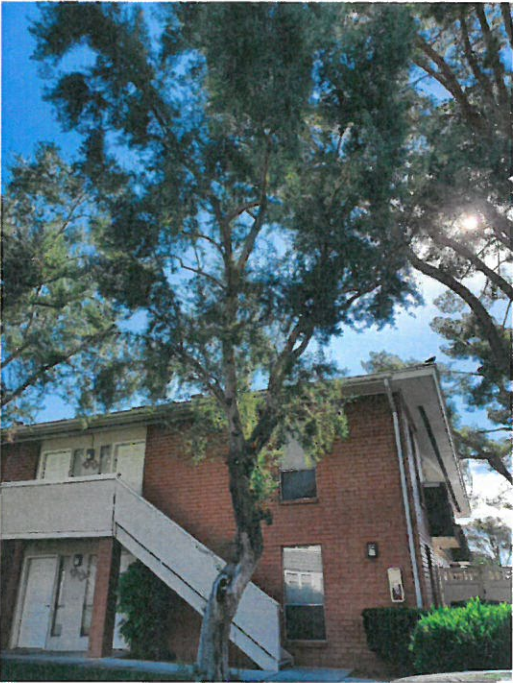
#67 (AP) Improving, continue to monitor



#70 (AP) Removed not replaced



#71 (AP) Improving; continue to monitor



#72 (EO) Improving; continue to monitor



#72 (EO) Decay; continue to monitor



#73 (EO) Improving; continue to monitor



#73 (EO) Decay; continue to monitor



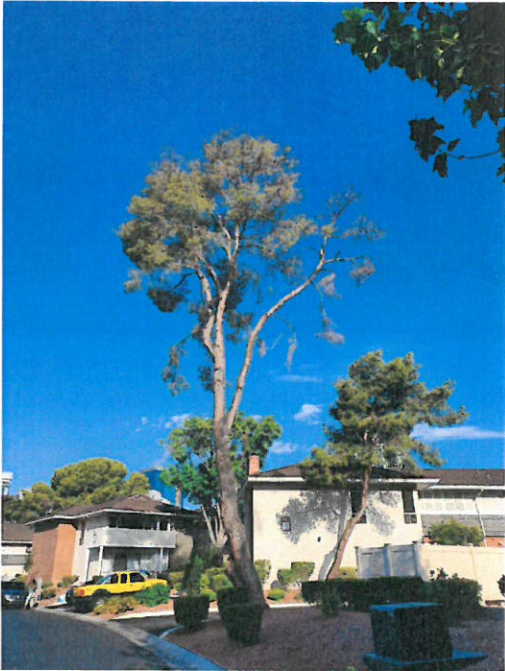
#74 (EO) Improving; continue to monitor



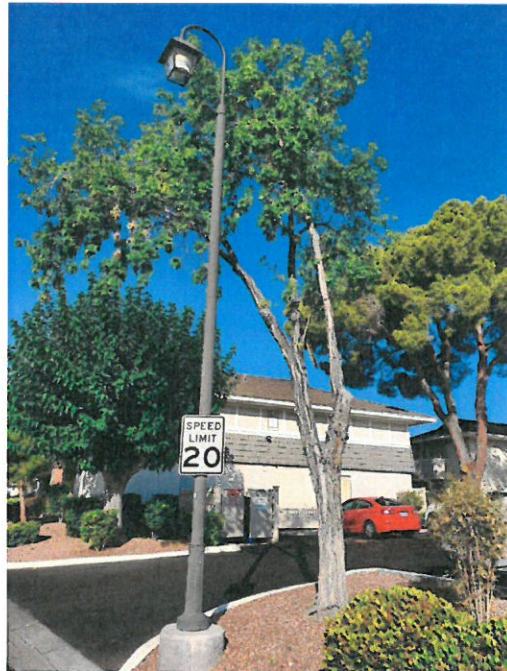
#74 (EO) Decay; continue to monitor

#75 (AP) Removed not replaced (no photo); #77 (AP) Removed not replaced (no photo);
#79 (AP) Removed not replaced (no photo);

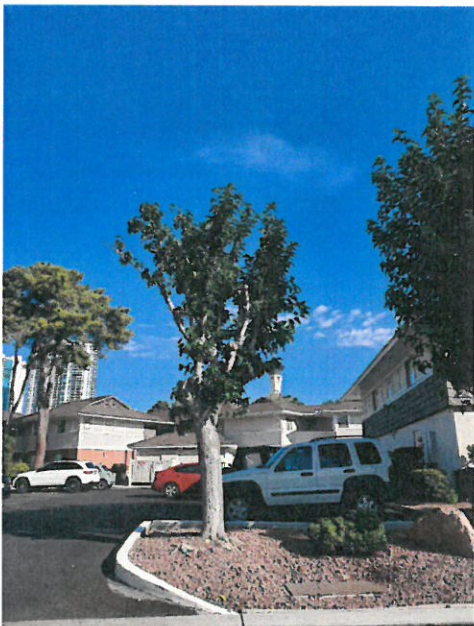
NEW TREES TO ADD TO THE LIST FOR REMOVAL



#20 (AP) Stressed/dying, had shown some improvement and was removed from Monitor List; now in decline again and recommended to remove and replace



#N-01 (AZ) Stressed/dying; remove and no replace



#N-02 (FM) Stressed/dying; remove and no replace



#N-03 (AP) Stressed, poor structure; remove and no replace due to utility box



#N-04 (AZ) Stressed, poor location for a tree; remove and no replace

NEW TREES TO ADD TO LIST FOR MONITORING AND INCREASED WATER



#N-05, 06, 07 (AP) Very stressed Pines west side of building #22. In need of additional irrigation (add 10-12 emitters per tree) as soon as possible. This is true of all AP onsite - could benefit from additional emitters.

MONTEREY

AT THE LAS VEGAS COUNTRY CLUB

KAREN AVE

VEGAS VALLEY DRIVE

OAKMONT AVE

OAKMONT DRIVE

GEARY PLACE

UNIT 1207
FITNESS CENTER

BLDG 10
LAUNDRY

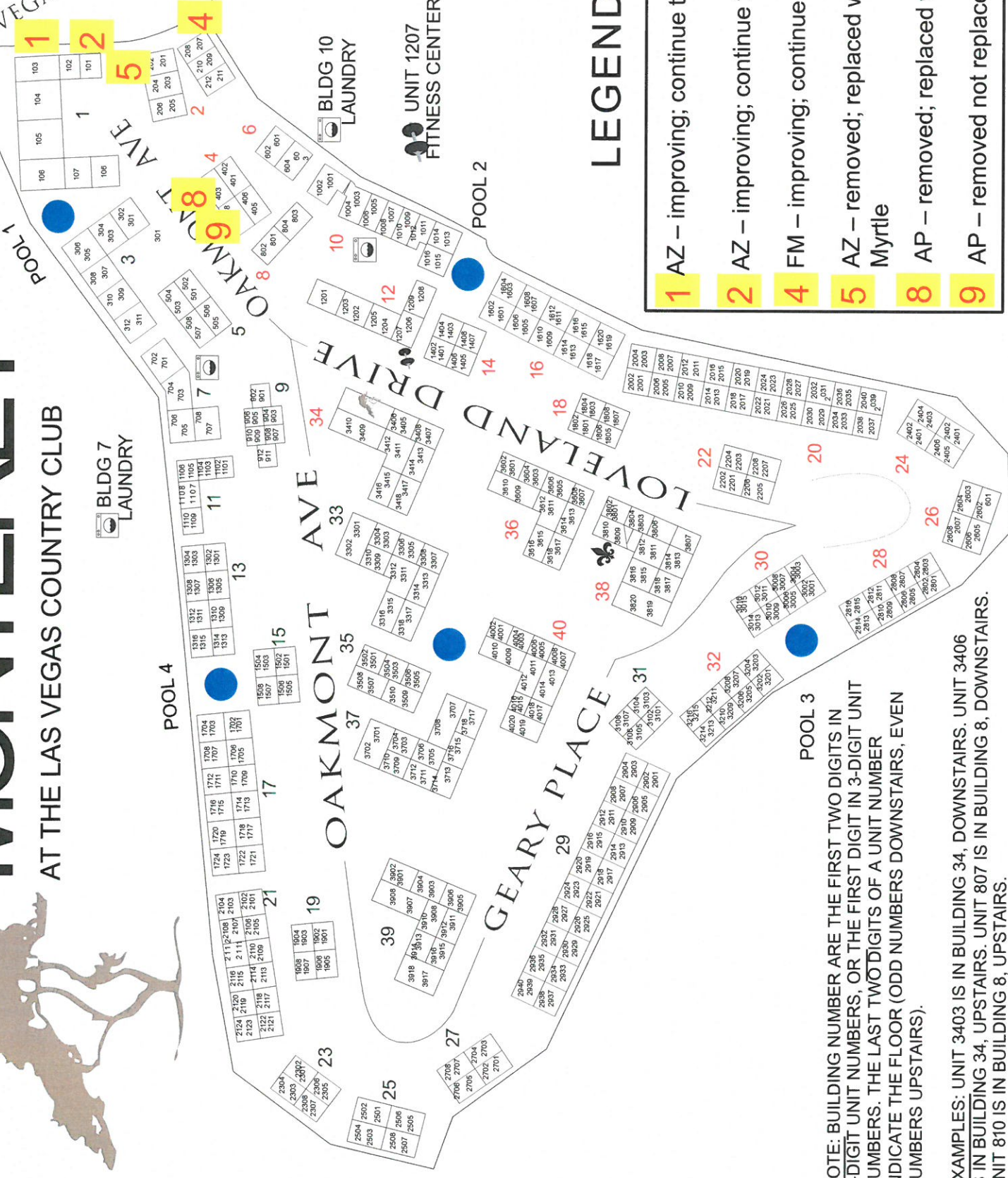
BLDG 7
LAUNDRY

LEGEND

- 1** AZ – improving; continue to monitor
- 2** AZ – improving; continue to monitor
- 4** FM – improving; continue to monitor
- 5** AZ – removed; replaced with Grape Myrtle
- 8** AP – removed; replaced with oak
- 9** AP – removed not replaced

NOTE: BUILDING NUMBER ARE THE FIRST TWO DIGITS IN 4-DIGIT UNIT NUMBERS, OR THE FIRST DIGIT IN 3-DIGIT UNIT NUMBERS. THE LAST TWO DIGITS OF A UNIT NUMBER INDICATE THE FLOOR (ODD NUMBERS DOWNSTAIRS, EVEN NUMBERS UPSTAIRS).

EXAMPLES: UNIT 3403 IS IN BUILDING 34, DOWNSTAIRS. UNIT 3406 IS IN BUILDING 34, UPSTAIRS. UNIT 807 IS IN BUILDING 8, DOWNSTAIRS. UNIT 810 IS IN BUILDING 8, UPSTAIRS.

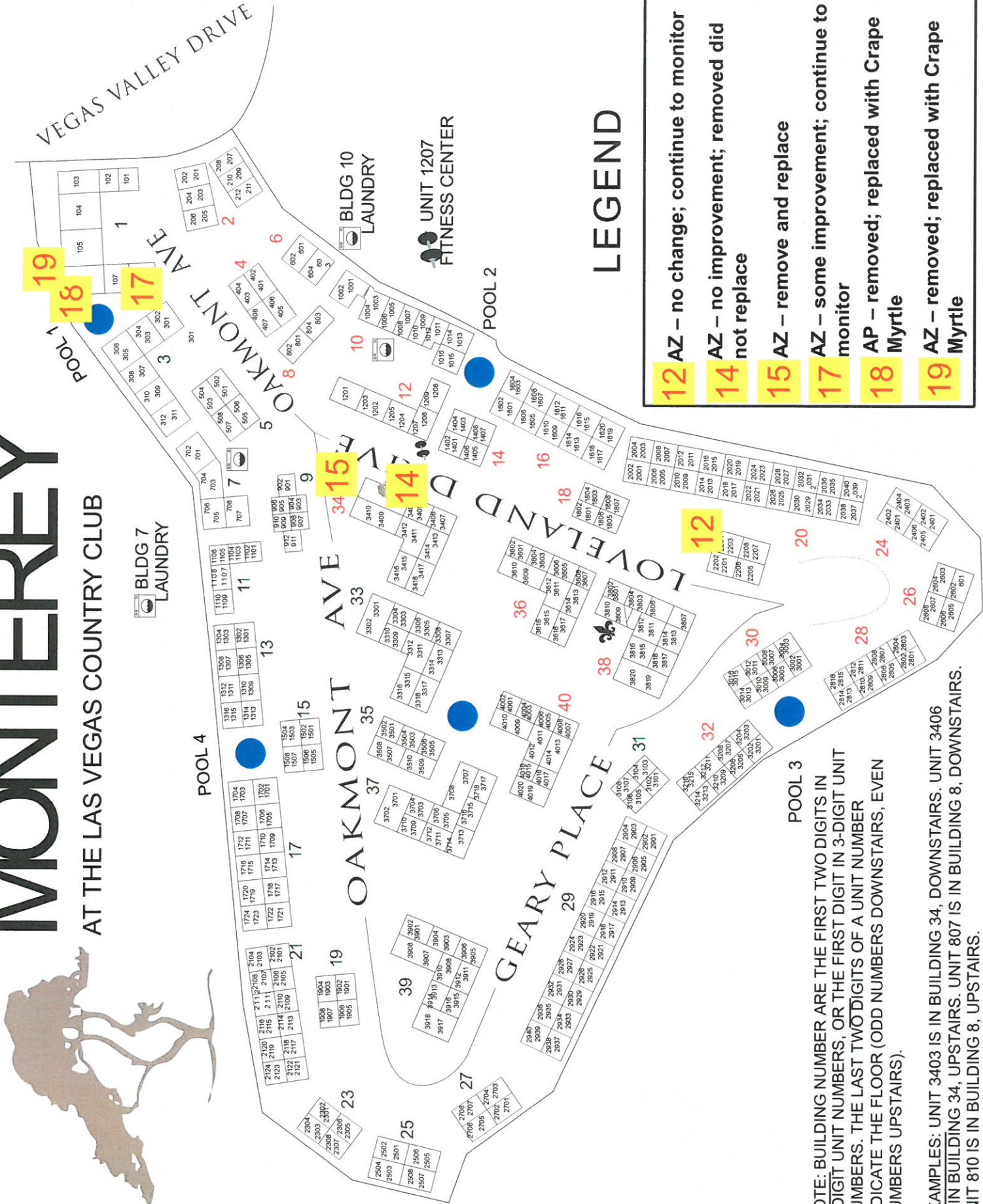


MONTEREY

AT THE LAS VEGAS COUNTRY CLUB

KAREN AVE

VEGAS VALLEY DRIVE



LEGEND

- 12** AZ – no change; continue to monitor
- 14** AZ – no improvement; removed did not replace
- 15** AZ – remove and replace
- 17** AZ – some improvement; continue to monitor
- 18** AP – removed; replaced with Grape Myrtle
- 19** AZ – removed; replaced with Grape Myrtle

NOTE: BUILDING NUMBER ARE THE FIRST TWO DIGITS IN 4-DIGIT UNIT NUMBERS, OR THE FIRST DIGIT IN 3-DIGIT UNIT NUMBERS. THE LAST TWO DIGITS OF A UNIT NUMBER INDICATE THE FLOOR (ODD NUMBERS DOWNSTAIRS, EVEN NUMBERS UPSTAIRS).

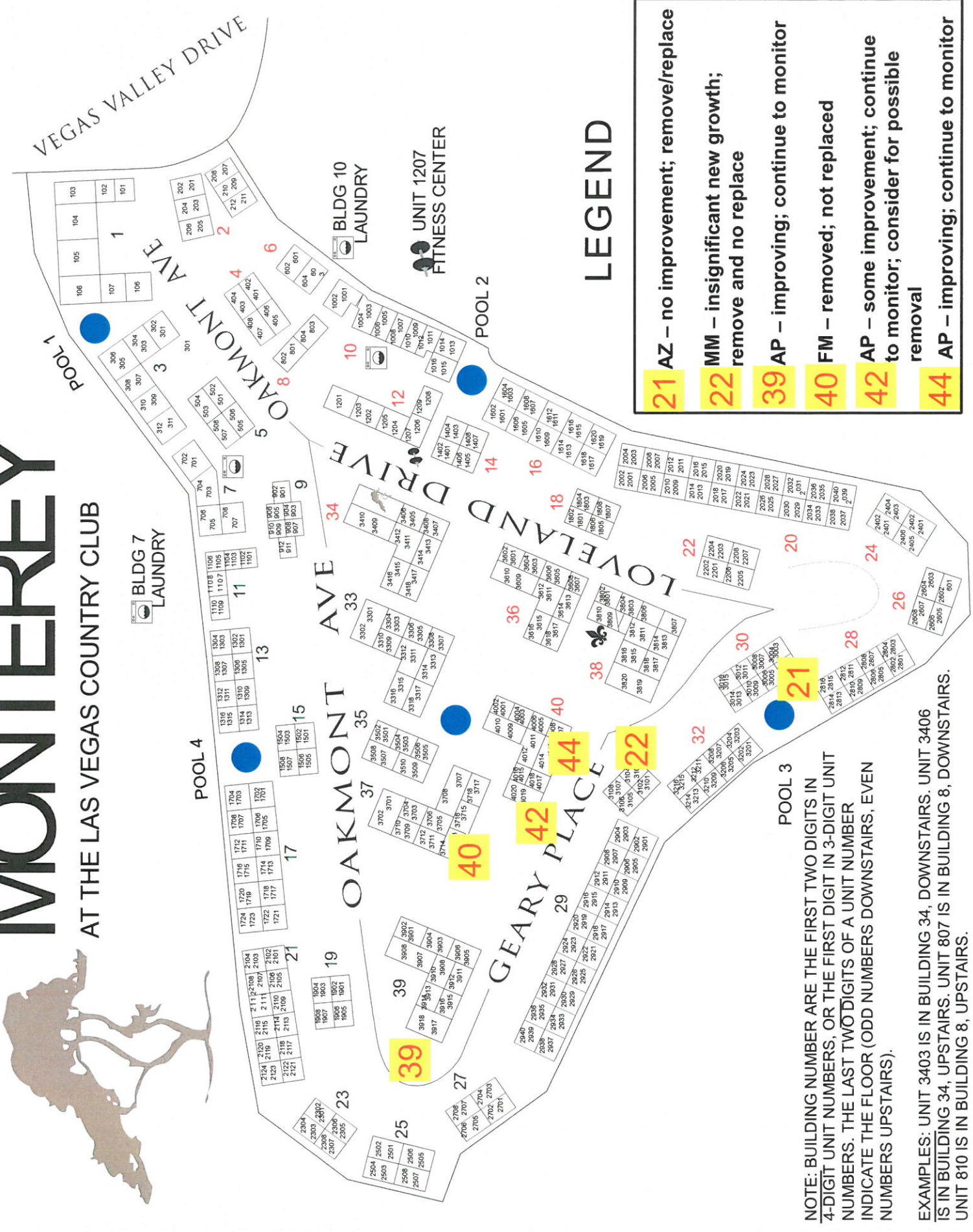
EXAMPLES: UNIT 3403 IS IN BUILDING 34, DOWNSTAIRS. UNIT 3406 IS IN BUILDING 34, UPSTAIRS. UNIT 807 IS IN BUILDING 8, DOWNSTAIRS. UNIT 810 IS IN BUILDING 8, UPSTAIRS.

MONTEREY

AT THE LAS VEGAS COUNTRY CLUB

KAREN AVE

VEGAS VALLEY DRIVE



LEGEND

- 21** AZ – no improvement; remove/replace
- 22** MM – insignificant new growth; remove and no replace
- 39** AP – improving; continue to monitor
- 40** FM – removed; not replaced
- 42** AP – some improvement; continue to monitor; consider for possible removal
- 44** AP – improving; continue to monitor

NOTE: BUILDING NUMBER ARE THE FIRST TWO DIGITS IN 4-DIGIT UNIT NUMBERS, OR THE FIRST DIGIT IN 3-DIGIT UNIT NUMBERS. THE LAST TWO DIGITS OF A UNIT NUMBER INDICATE THE FLOOR (ODD NUMBERS DOWNSTAIRS, EVEN NUMBERS UPSTAIRS).

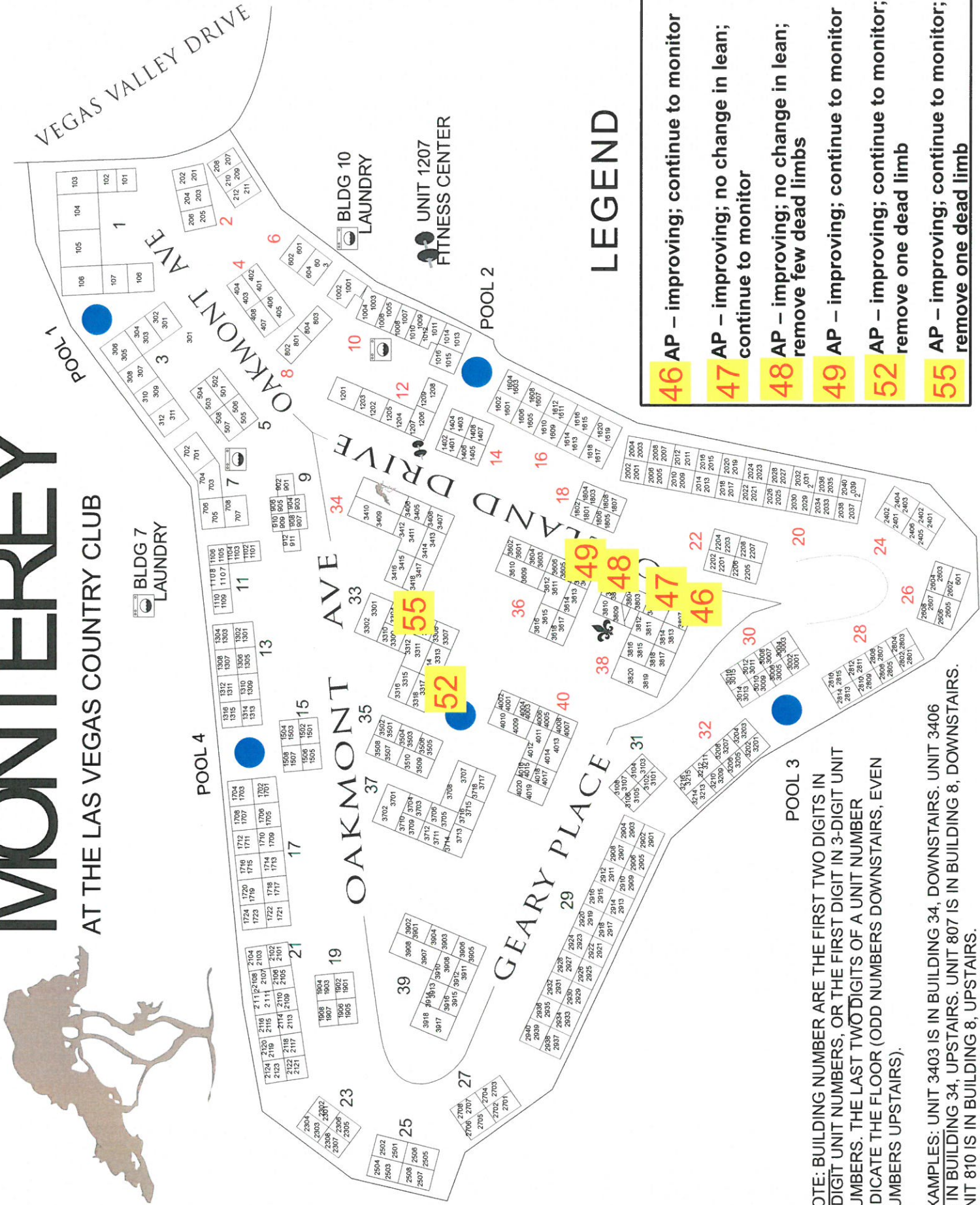
EXAMPLES: UNIT 3403 IS IN BUILDING 34, DOWNSTAIRS. UNIT 3406 IS IN BUILDING 34, UPSTAIRS. UNIT 807 IS IN BUILDING 8, DOWNSTAIRS. UNIT 810 IS IN BUILDING 8, UPSTAIRS.

MONTEREY

AT THE LAS VEGAS COUNTRY CLUB

KAREN AVE

VEGAS VALLEY DRIVE



LEGEND

- 46** AP – improving; continue to monitor
- 47** AP – improving; no change in lean; continue to monitor
- 48** AP – improving; no change in lean; remove few dead limbs
- 49** AP – improving; continue to monitor
- 52** AP – improving; continue to monitor; remove one dead limb
- 55** AP – improving; continue to monitor; remove one dead limb

NOTE: BUILDING NUMBER ARE THE FIRST TWO DIGITS IN 4-DIGIT UNIT NUMBERS, OR THE FIRST DIGIT IN 3-DIGIT UNIT NUMBERS. THE LAST TWO DIGITS OF A UNIT NUMBER INDICATE THE FLOOR (ODD NUMBERS DOWNSTAIRS, EVEN NUMBERS UPSTAIRS).

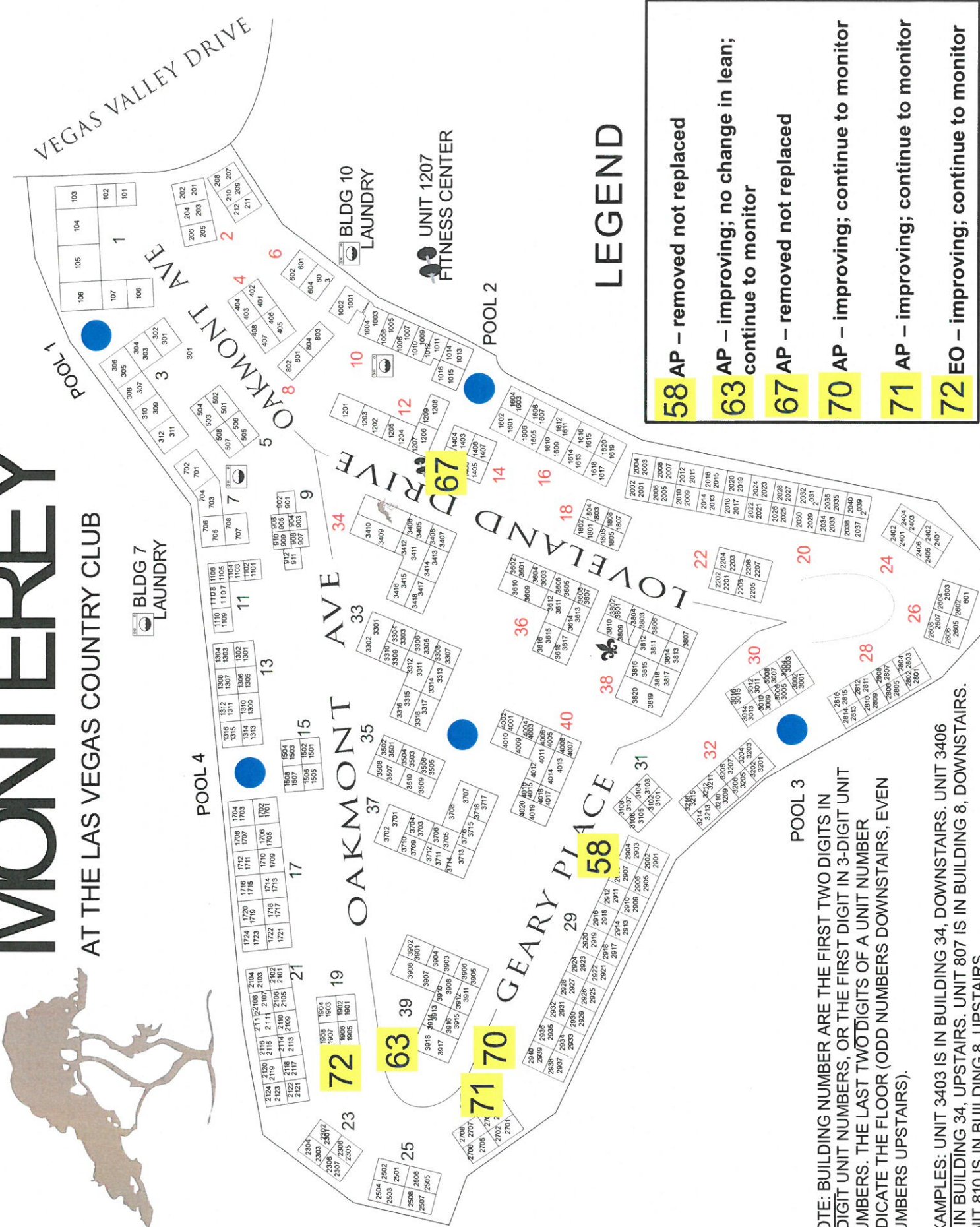
EXAMPLES: UNIT 3403 IS IN BUILDING 34, DOWNSTAIRS. UNIT 3406 IS IN BUILDING 34, UPSTAIRS. UNIT 807 IS IN BUILDING 8, DOWNSTAIRS. UNIT 810 IS IN BUILDING 8, UPSTAIRS.

MONTEREY

AT THE LAS VEGAS COUNTRY CLUB

KAREN AVE

VEGAS VALLEY DRIVE



LEGEND

- 58 AP** – removed not replaced
- 63 AP** – improving; no change in lean; continue to monitor
- 67 AP** – removed not replaced
- 70 AP** – improving; continue to monitor
- 71 AP** – improving; continue to monitor
- 72 EO** – improving; continue to monitor

NOTE: BUILDING NUMBER ARE THE FIRST TWO DIGITS IN 4-DIGIT UNIT NUMBERS, OR THE FIRST DIGIT IN 3-DIGIT UNIT NUMBERS. THE LAST TWO DIGITS OF A UNIT NUMBER INDICATE THE FLOOR (ODD NUMBERS DOWNSTAIRS, EVEN NUMBERS UPSTAIRS).

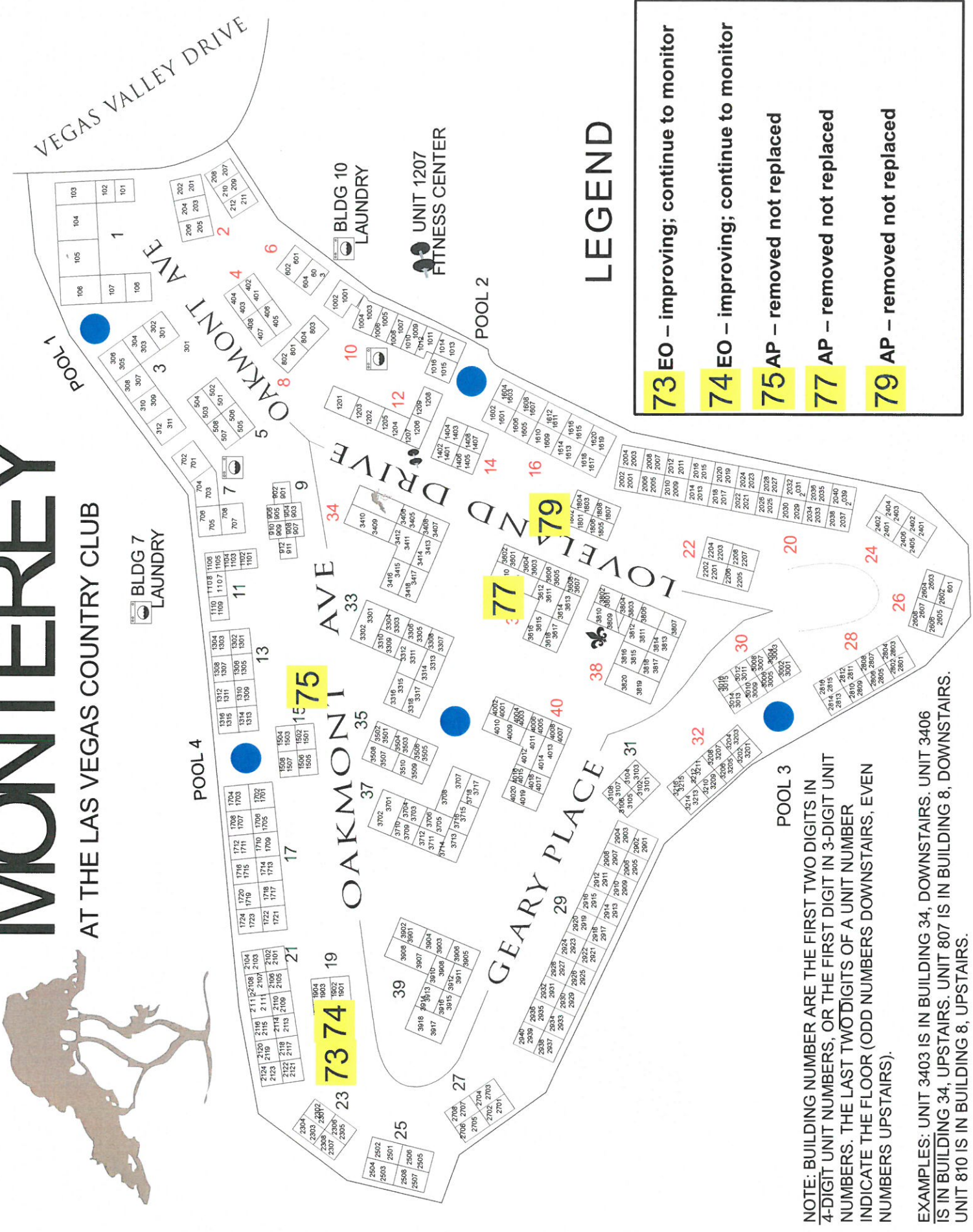
EXAMPLES: UNIT 3403 IS IN BUILDING 34, DOWNSTAIRS. UNIT 3406 IS IN BUILDING 34, UPSTAIRS. UNIT 807 IS IN BUILDING 8, DOWNSTAIRS. UNIT 810 IS IN BUILDING 8, UPSTAIRS.

MONTEREY

AT THE LAS VEGAS COUNTRY CLUB

KAREN AVE

VEGAS VALLEY DRIVE



LEGEND

- 73 EO** – improving; continue to monitor
- 74 EO** – improving; continue to monitor
- 75 AP** – removed not replaced
- 77 AP** – removed not replaced
- 79 AP** – removed not replaced

NOTE: BUILDING NUMBER ARE THE FIRST TWO DIGITS IN 4-DIGIT UNIT NUMBERS, OR THE FIRST DIGIT IN 3-DIGIT UNIT NUMBERS. THE LAST TWO DIGITS OF A UNIT NUMBER INDICATE THE FLOOR (ODD NUMBERS DOWNSTAIRS, EVEN NUMBERS UPSTAIRS).

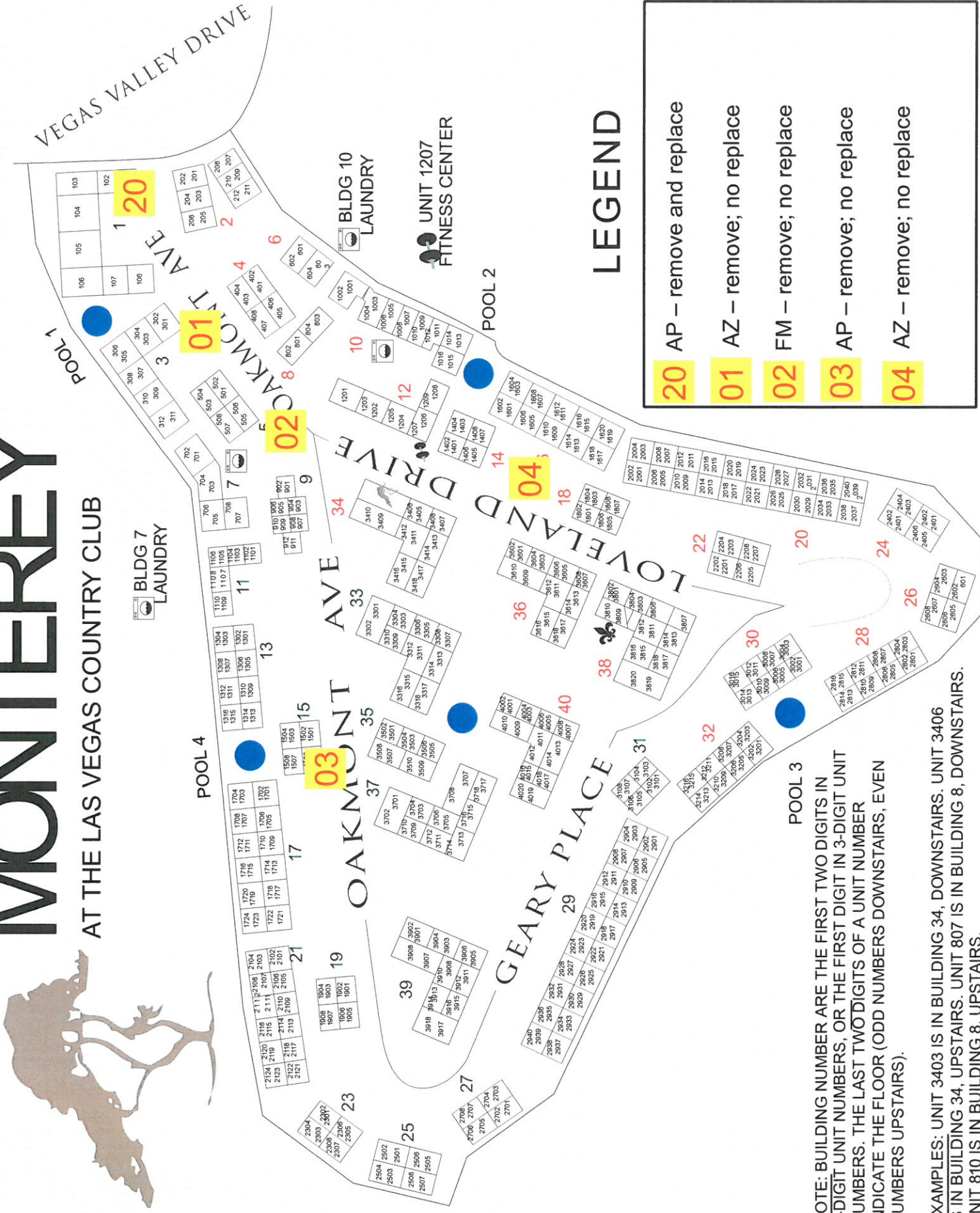
EXAMPLES: UNIT 3403 IS IN BUILDING 34, DOWNSTAIRS. UNIT 3406 IS IN BUILDING 34, UPSTAIRS. UNIT 807 IS IN BUILDING 8, DOWNSTAIRS. UNIT 810 IS IN BUILDING 8, UPSTAIRS.

MONTEREY

AT THE LAS VEGAS COUNTRY CLUB

KAREN AVE

VEGAS VALLEY DRIVE



LEGEND

- 20** AP – remove and replace
- 01** AZ – remove; no replace
- 02** FM – remove; no replace
- 03** AP – remove; no replace
- 04** AZ – remove; no replace

NOTE: BUILDING NUMBER ARE THE FIRST TWO DIGITS IN 4-DIGIT UNIT NUMBERS, OR THE FIRST DIGIT IN 3-DIGIT UNIT NUMBERS. THE LAST TWO DIGITS OF A UNIT NUMBER INDICATE THE FLOOR (ODD NUMBERS DOWNSTAIRS, EVEN NUMBERS UPSTAIRS).

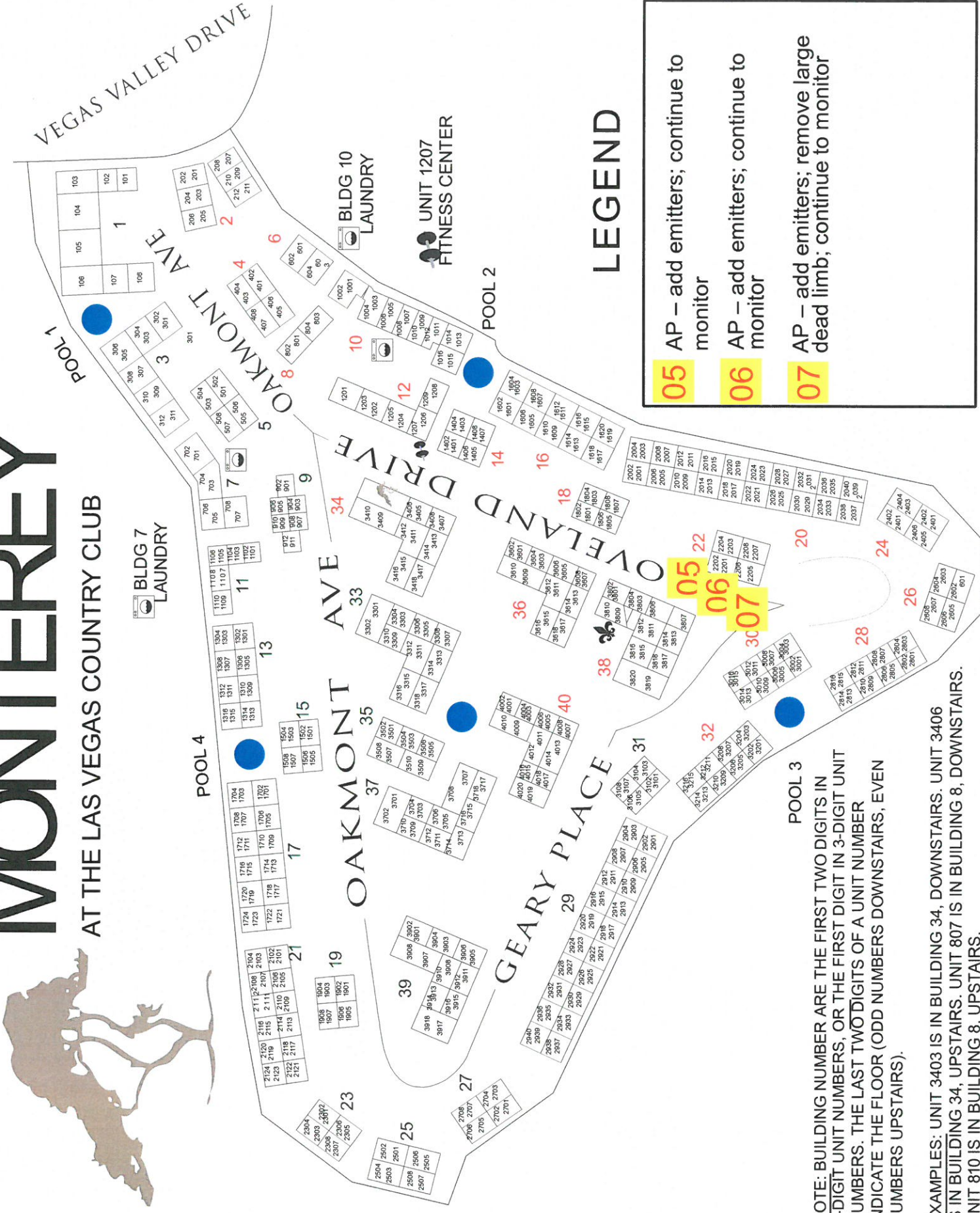
EXAMPLES: UNIT 3403 IS IN BUILDING 34, DOWNSTAIRS. UNIT 3406 IS IN BUILDING 34, UPSTAIRS. UNIT 807 IS IN BUILDING 8, DOWNSTAIRS. UNIT 810 IS IN BUILDING 8, UPSTAIRS.

MONTEREY

AT THE LAS VEGAS COUNTRY CLUB

KAREN AVE

VEGAS VALLEY DRIVE



LEGEND

- 05** AP – add emitters; continue to monitor
- 06** AP – add emitters; continue to monitor
- 07** AP – add emitters; remove large dead limb; continue to monitor

NOTE: BUILDING NUMBER ARE THE FIRST TWO DIGITS IN 4-DIGIT UNIT NUMBERS, OR THE FIRST DIGIT IN 3-DIGIT UNIT NUMBERS. THE LAST TWO DIGITS OF A UNIT NUMBER INDICATE THE FLOOR (ODD NUMBERS DOWNSTAIRS, EVEN NUMBERS UPSTAIRS).

EXAMPLES: UNIT 3403 IS IN BUILDING 34, DOWNSTAIRS. UNIT 3406 IS IN BUILDING 34, UPSTAIRS. UNIT 807 IS IN BUILDING 8, DOWNSTAIRS. UNIT 810 IS IN BUILDING 8, UPSTAIRS.